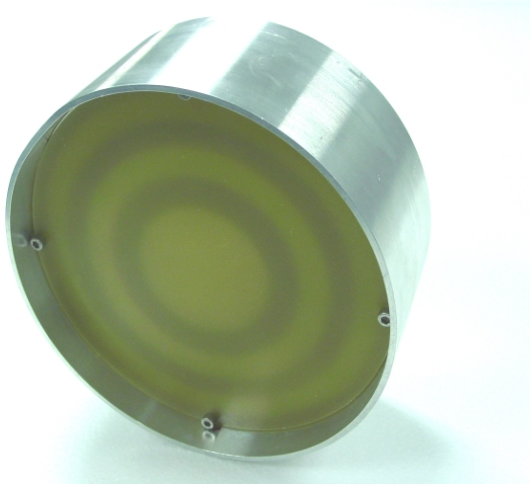




K-Band Integrated Antenna and RF Front End

for Doppler Speed Radar Systems and Other Applications



EMAG Fresnel Lens Antenna

Frequency K-band

Antenna Gain 21dB

3dB Beamwidth 8-15°

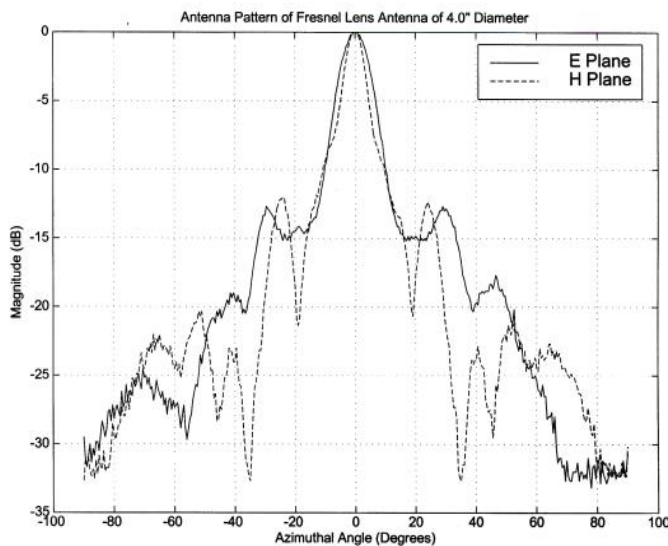
Side Lobe Level -13dB

Side Lobe Position $\pm 23^\circ$

Mixer IF Signal Output Max. 2

Input Voltage 5V

Transmitted Power Min. 5mW



- Beamwidth, side lobe level and side lobe position can be customized easily by request

- Able to build low cost K-Band Doppler radar systems with integrated mixer and gunn diode oscillator

- Able to measure range, direction, or motion

- Useful for various applications (radar, altimeter, vehicle control, collision avoidance, direction monitoring, etc.)